

Saint Rémy de Provence, au cœur du massif des Alpilles



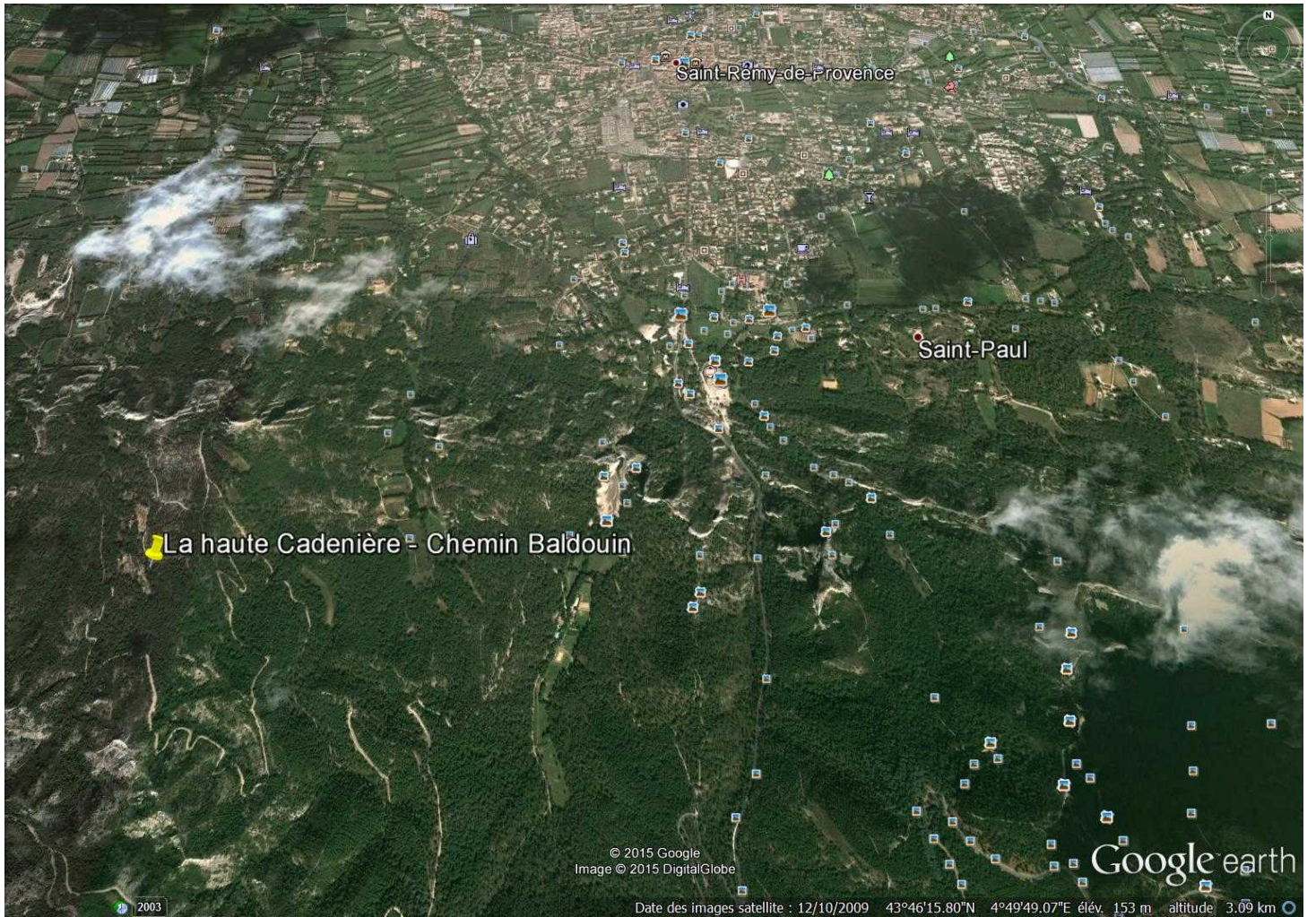












Saint Rémy de Provence : At the hearth of the Alpilles

LOCATION :

The house is located 3 kilometers south west of Saint Rémy de Provence, at the heart of the Alpilles in a beautiful location.

Access to the house by an unmade track of 1.5 km (5 minutes) that winds through the hills above the village. Avignon TGV station 25 minutes. Marseille Airport 50 minutes .

DESCRIPTION :

The house renovated in 2011 extends over 260 m² and includes:

Ground floor two double bedrooms each with a shower, sink and toilet,

A large room of 90 m² with living room with fireplace, dining room and US kitchen facing East and South.

A laundry with washing machine and dryer. Guest toilet.

Upstairs two suites of 40 m² with their bathrooms with bath, shower, double sinks, dressing room and separate wc .

View over the Alpilles. Terraces surrounding the house and pétanque playground.

LAND:

The property is surrounded by 1.5 hectares of land consists of olive groves, apricot and a large lawn in front of the house. Quiet. Neighbor closest to 300 meters.

Automatic underground watering system.

Swimming pool 10 x 5 meters with salt system aqualysis. (Permit for 17 x 5 m is granted)

PRICE

Prix : 1 600 000 Euros

